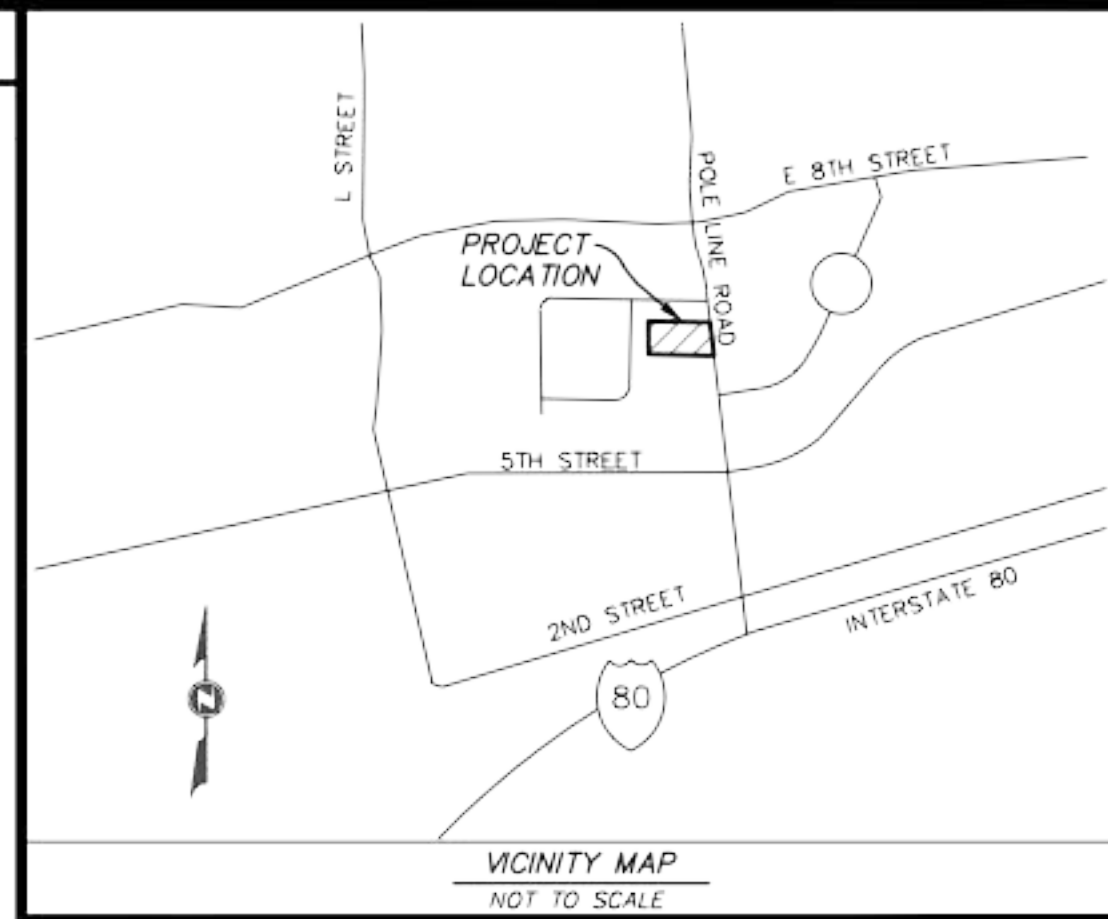


LEGEND

PROPOSED	EXISTING	
12"SD	12"SD	STORM DRAIN AND MANHOLE
12"PSD	12"PSD	PERFORATED STORM DRAIN
6"SS	6"SS	SANITARY SEWER AND MANHOLE
+	+	FIRE HYDRANT AND VALVE ASSEMBLY
10"W	10"W	WATER MAIN, VALVE, DOUBLE DETECTOR CHECK VALVE, METER & BLOWOFF VALVE
-	-	JOINT UTILITY TRENCH
-	-	GAS MAIN
-	-	ELECTRICAL LINE UC-UNDERGROUND OH-OVERHEAD
-	-	TELEPHONE LINE
-	-	STREET LIGHT CONDUIT, WIRING & PULL BOX
-	-	STREET LIGHT SERVICE POINT AT UTILITY CO. BOX
-	-	STREET LIGHT AND POLE
-	-	UTILITY POLE WITH DOWN GUY & ANCHOR
-	-	POWER POLE, TELEPHONE POLE, JOINT POLE
-	-	FENCE
-	-	VERTICAL CURB, GUTTER & SIDEWALK WITH DRIVEWAY
-	-	CATCH BASIN OR DRAINAGE INLET
-	-	FLOWLINE OF DITCH OR SWALE
-	-	DIRECTION OF SURFACE DRAINAGE FLOW
-	-	CUT OR FILL SLOPE
-	-	RIGHT OF WAY OR PROPERTY LINE
-	-	STREET CENTERLINE OR BASELINE
-	-	SURVEY MONUMENT
-	-	SIGN
-	-	TREE
-	-	TREE TO BE REMOVED
-	-	EXISTING GROUND SURFACE ELEVATION
-	-	EDGE OF PAVEMENT AND ELEVATION
-	-	FLOW LINE GRADE
-	-	TOP OF CURB GRADE/ASPHALT GRADE
-	-	FINISHED CONCRETE GRADE
-	-	TOP OF CURB/FINISHED GRADE/SUBGRADE ELEVATION
-	-	MATCH EXISTING GRADE (FIELD VERIFY)
-	-	PUBLIC UTILITY EASEMENT
-	-	ROLL CURB, GUTTER, & SIDEWALK
-	-	GRADING RIDGE



OWNER/SUBDIVIDER: 715 EAST, LLC
1949 5TH STREET, SUITE 107
DAVIS, CA 94616
(530) 836-6688 ext. 102

ENGINEER/SURVEYOR: LAUGENOUR AND MEIKLE
CIVIL ENGINEERS
608 COURT STREET
WOODLAND, CA 95695
PHONE: (530) 662-1755

ASSESSOR'S NUMBER: 070-544-027-000

EXISTING USE: CONVALESCENT HOME (NO LONGER IN USE)
PROPOSED USE: 32 DUPLEX AND TRIPLEX HOMES

EXISTING ZONING: R-1
PROPOSED ZONING: R-1

SEWER SERVICE: CITY OF DAVIS
DRAINAGE SERVICE: CITY OF DAVIS
WATER SERVICE: CITY OF DAVIS
ELECTRIC SERVICE: P.G.&E.
GAS SERVICE: P.G.&E.
TELEPHONE SERVICE: AT&T

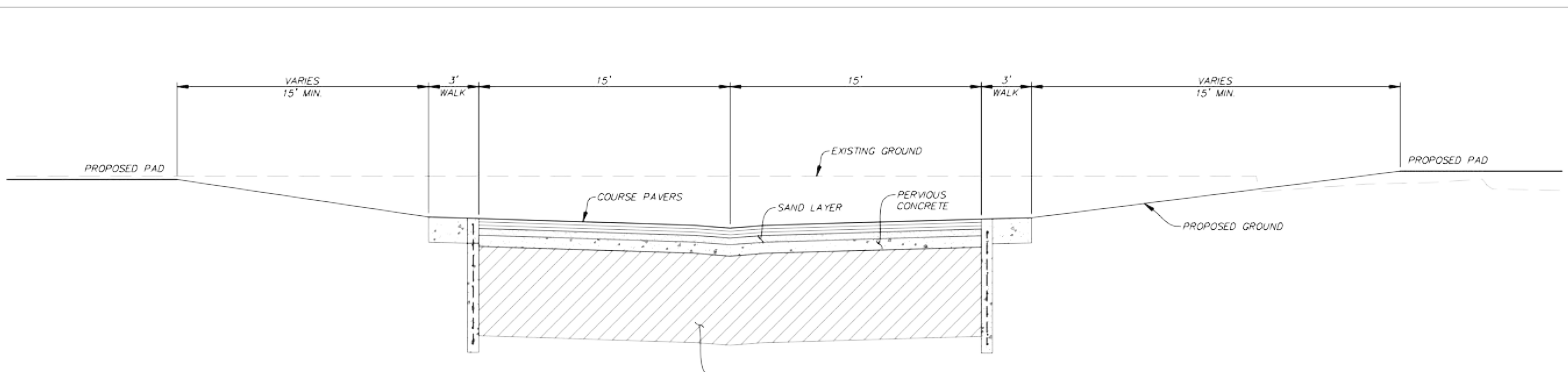
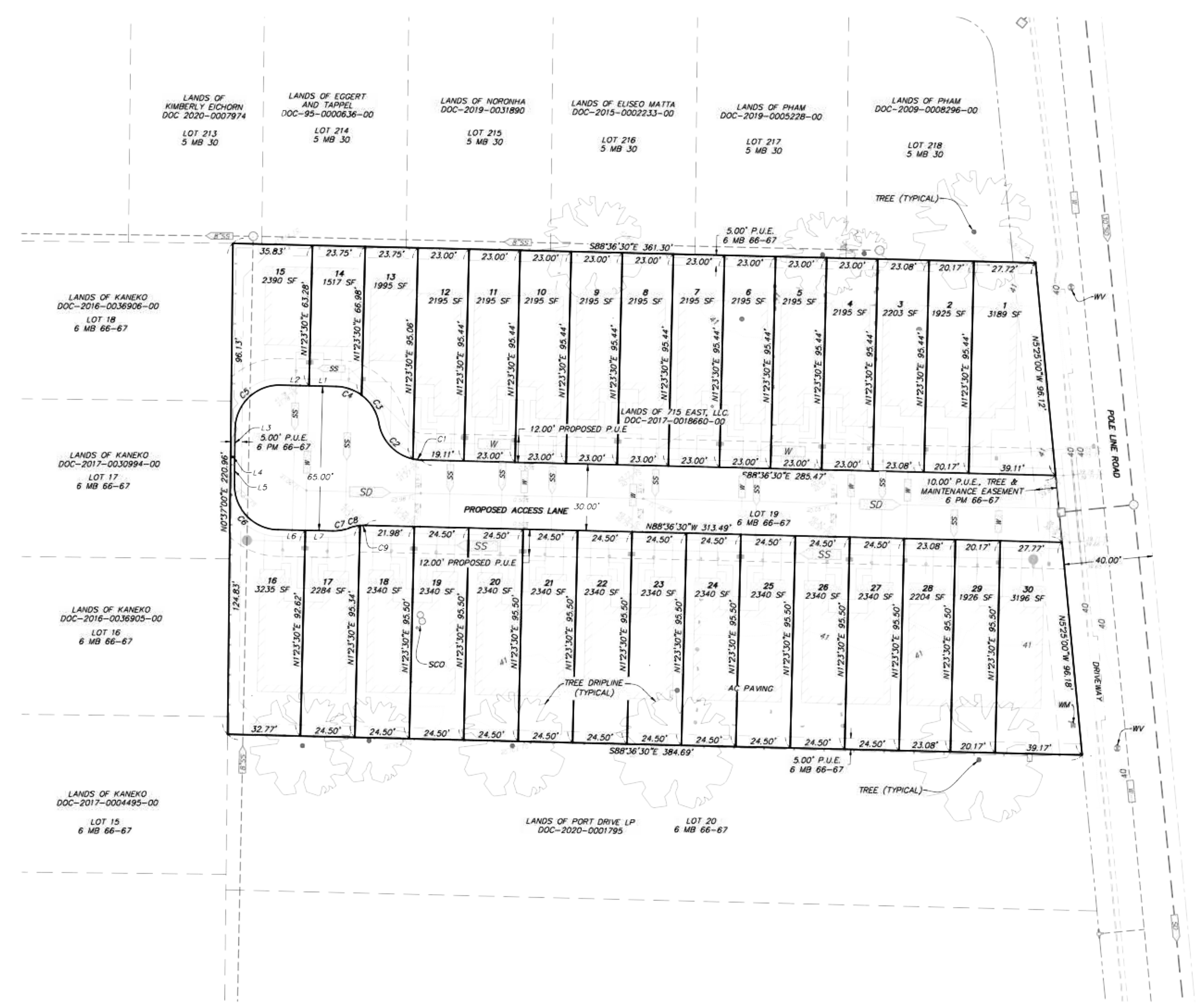
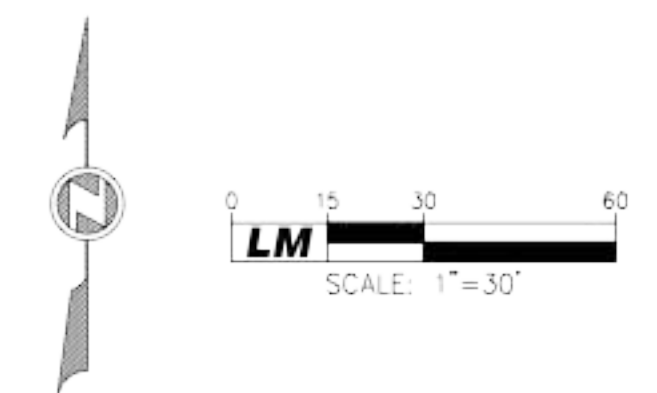
FLOOD ZONES: 06113C0611G, ZONE X
GROSS AREA: 1.892 ACRES±
BENCHMARK: NGS "ALHAMBRA" PID: A15051 ELEV: 42.6' (NAVD)

LINE TABLE

LINE	BEARING	LENGTH
L1	S88°34'32"E	12.18'
L2	S88°34'32"E	12.82'
L3	N00°37'00"E	12.55'
L4	S89°23'00"E	1.87'
L5	N00°37'00"E	12.55'
L6	N88°49'44"W	12.34'
L7	N88°49'44"W	12.31'

CURVE TABLE

CURVE	RADIUS	LENGTH	DELTA
C1	20.00'	3.91'	11°12'43"
C2	20.00'	23.55'	67°28'32"
C3	20.00'	15.11'	43°17'34"
C4	20.00'	12.34'	35°21'43"
C5	20.00'	31.70'	90°48'28"
C6	20.00'	31.22'	89°26'44"
C7	20.00'	7.50'	21°28'25"
C8	20.00'	5.04'	14°26'37"
C9	20.00'	2.53'	7°15'01"



(A) TYPICAL STREET CROSS SECTION
NTS



A7.1

TENTATIVE SUBDIVISION MAP No. 5216
715 EAST, LLC.
LOCATED IN A PORTION OF SECTION 8 TOWNSHIP 8 NORTH,
RANGE 2 EAST, MOUNT DIABLO MERIDIAN
CITY OF DAVIS, YOLO COUNTY, CALIFORNIA

LM LAUGENOUR AND MEIKLE
CIVIL ENGINEERING · LAND SURVEYING · PLANNING
608 COURT STREET, WOODLAND, CALIFORNIA 95695 · PHONE: (530) 662-1755
P.O. BOX 828, WOODLAND, CALIFORNIA 95776 · FAX: (530) 662-4602

JULY 14, 2021